



-Fitting Instructions-

Crash Pads

– S1000R from model 2021–



Parts-No: S700488-F15

General Notes!



AC Schnitzer – S1000RR –

Important Notes!

It is essential to read these installation instructions before starting the installation work. AC Schnitzer accepts no liability for damage caused by improper installation!

These installation instructions are intended exclusively for use by authorised AC Schnitzer or BMW dealers. The target group for these installation instructions is in any case specialist personnel trained on BMW vehicles with the appropriate specialist knowledge and tools. Knowledge of material properties and standards is assumed!

The crash pads offered by AC Schnitzer provide protection for the frame and the add-on parts in the event of "rollovers" or so-called "slips". Unfortunately, even these components are no guarantee of accidents without consequential damage. It is quite possible that the crash pads can become caught on protruding parts, such as curbs, kerb lids, kerbs, etc., in the event of a "skid", curbs, manhole covers, kerbstones, etc. and give way to the force exerted.

Any resulting consequential damage is the sole responsibility of the person who caused the fall and cannot be claimed from AC Schnitzer. Please inform your customers about this situation!

Fitting

All work must be carried out in accordance with the applicable safety regulations (e.g. protective goggles).

Painting

- n/a

Fitting Time (1 unit = 5 minutes)

The fitting time is **5 unit**

Painting time (1 unit = 5 minutes)

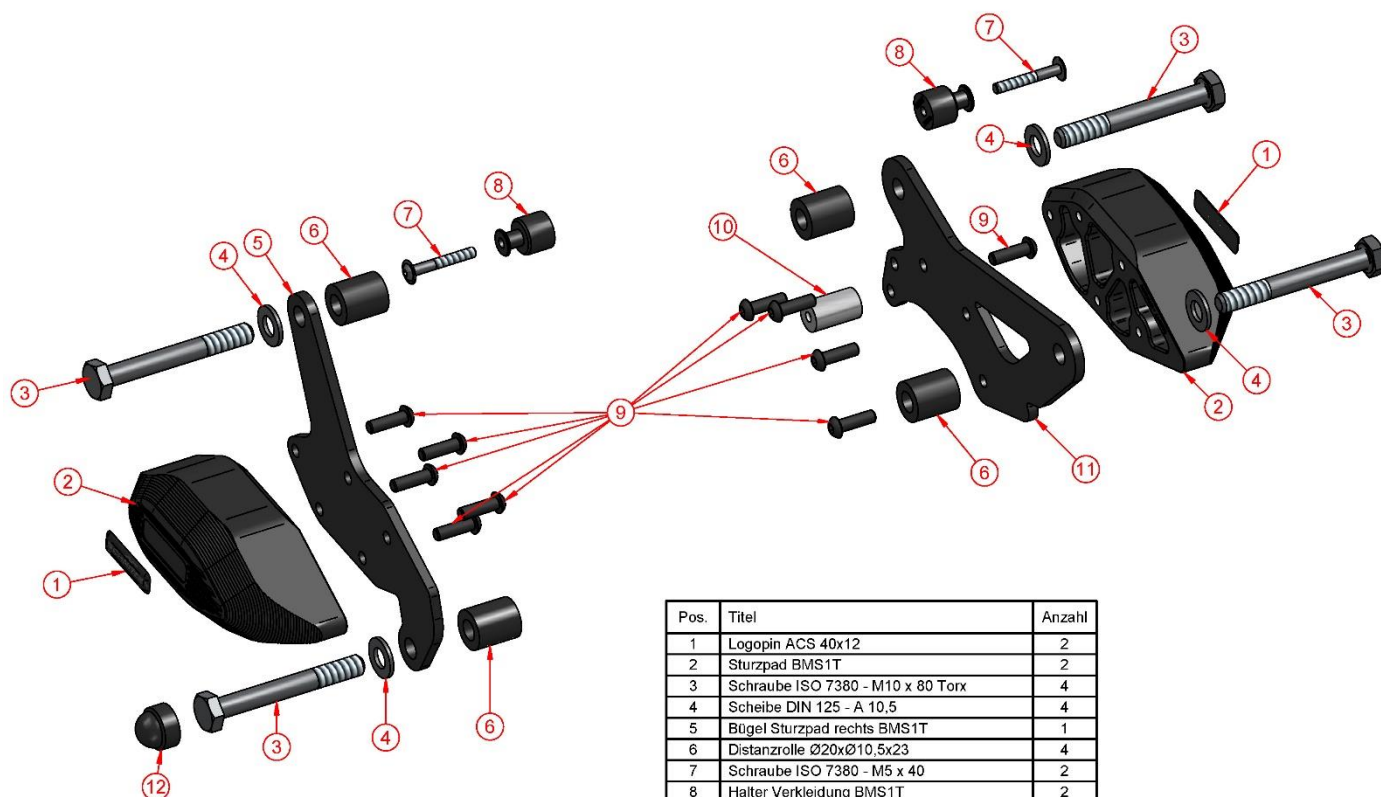
- n/a

Required tools

- Torx wrench
- Hexagon wrench
- Torque wrench

Components Supplied

AC Schnitzer



Pos.	Titel	Anzahl
1	Logopin ACS 40x12	2
2	Sturzpad BMS1T	2
3	Schraube ISO 7380 - M10 x 80 Torx	4
4	Scheibe DIN 125 - A 10,5	4
5	Bügel Sturzpad rechts BMS1T	1
6	Distanzrolle Ø20xØ10,5x23	4
7	Schraube ISO 7380 - M5 x 40	2
8	Halter Verkleidung BMS1T	2
9	Schraube ISO 7380 - M6 x 20 schwarz	10
10	Distanzrolle Ø15xM6x25	1
11	Bügel Sturzpad links BMS1T	1
12	Abdeckkappe für SW 17	1

Fitting instructions



AC Schnitzer

Fitting right

Park the vehicle with a motorbike stand.



Unscrew the left and right nose spoilers.



Loosen the left and right interior trim and remove it completely.



Loosen the left and right trim, pull it out of the retaining pegs and remove.



Loosen and remove both engine mounting screws on the right-hand side (these will not be reused).



Fitting instructions



AC Schnitzer

Tighten or retighten the five screws securing the right-hand pad. Tightening torque 2.5 Nm



Insert the supplied spacer sleeves into the frame. Secure the crash pad to the frame with the washers and screws supplied.



Tightening torque 60 Nm



Remove the retaining screw of the fairing on the **right and left side**. Pull the rubber off the screw and press it onto the supplied spacer roller.



Attach the spacer roller to the frame with the supplied screw. **Right and left sides are identical.**

Tightening torque 4 Nm



Fitting instructions



AC Schnitzer

Fitting left

Tighten or retighten the four screws securing the left pad.
Tightening torque 2.5 Nm

Also tighten or retighten the screw of the stop sleeve.
tighten. Tightening torque 4 Nm



Loosen and remove both engine mounting screws on the left-hand side (these will not be reused).



Insert the supplied spacer sleeves into the frame.
Secure the crash pad to the frame with the washers and screws supplied. *Same meaning as on the right side.*

Tightening torque 60 Nm



Clean the recess in the pad and stick in the sticker.
Press the plastic covers onto the right-hand screw head.



Refit all trim parts according to the manufacturer's
assemble.



Errors excepted and subject to change!