

AC SCHNITZER

- Assembly instructions -

**Handlebar riser
- R1300GS -**



S700738-F25

General information!



AC Schnitzer Handlebar riser S700738-F25

Important notes!

These installation instructions must be read in full before starting installation work and do not claim to be completeness with regard to each work step. Subject to technical, editorial and content changes! AC Schnitzer accepts no liability for damage caused by incorrect installation!

Check that the goods are complete and undamaged before starting work.

Later complaints cannot be considered.

These installation instructions are intended exclusively for use by authorised AC Schnitzer or BMW dealers.

authorised dealers. The target group for these installation instructions is in all cases specialist personnel trained on BMW vehicles with the appropriate expertise and tools. Knowledge of material properties and standards is assumed!

Work on steering systems should only be carried out by qualified personnel!

Before installation:

Before mounting, the vehicle must be adequately secured against rolling away or tipping over. We recommend using the standard main stand or an original BMW assembly stand!

Keep children and pets away from the work area! Risk of accident due to getting caught or electrical short circuit! Remove jewellery (chains, watches, rings, etc.) before starting work!

After installation:

After completing the work, carry out a test drive if necessary! After completing the test drive, all screw connections must be checked for tightness and all moving parts must be checked for sufficient clearance.

Installation time (1 AW = 5 minutes)

The installation time is approx. 10 AW, which may vary depending on the condition and equipment of the vehicle.

(This value is only a recommendation and is not binding).

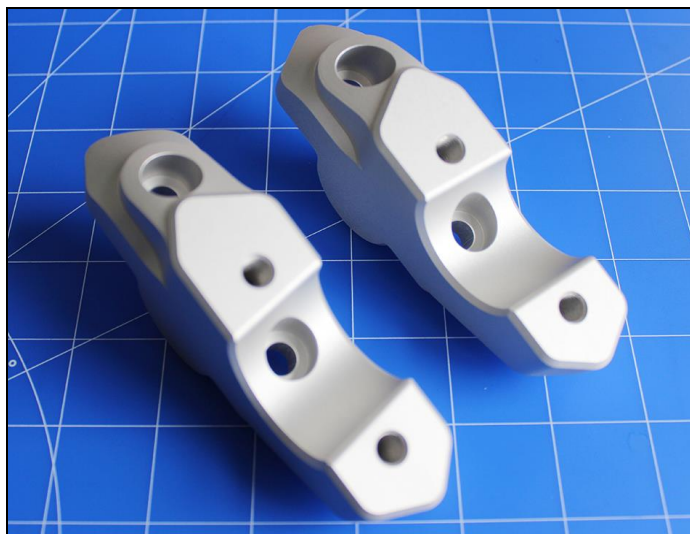
Tool required:

- Standard Torx tool
- Standard Allen tool
- Standard socket spanner tool
- Torque spanner
- Screw adhesive / medium-strength threadlocker

Components supplied



AC Schnitzer Handlebar riser S700738-F25



Handlebar riser (only available complete)	Anzahl
Clamping block lower part ACS BKxx	2
Cheese head screw DIN 6912 - M8x25	4
Cable ties	4

Assembly instructions



AC Schnitzer Handlebar riser S700738-F25

Assembly

Park the vehicle safely and secure it against falling and /
or
rolling away.



Protect the work surface from damage etc. accordingly.



Loosen the four fixing screws of the handlebar clamps
anti-clockwise.

Hold the handlebars firmly and ensure that they cannot
twist (risk of damage).



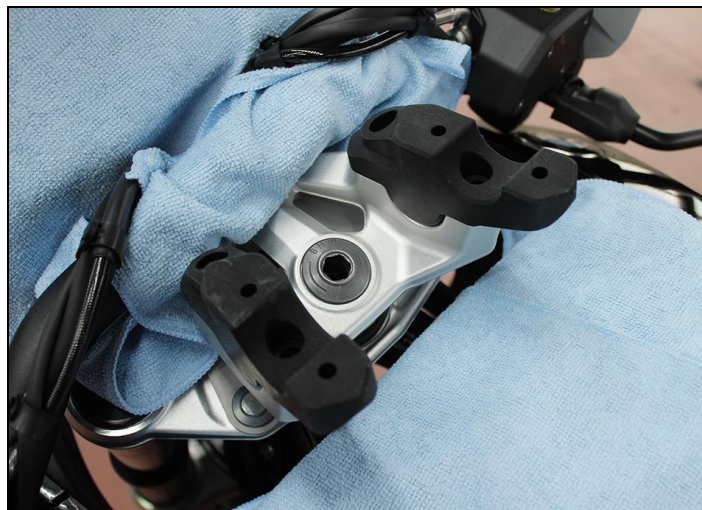
Assembly instructions



AC Schnitzer Handlebar riser S700738-F25

Remove the standard handlebar clamps and carefully place the handlebars above the fork bridge.

Caution: Risk of damage.

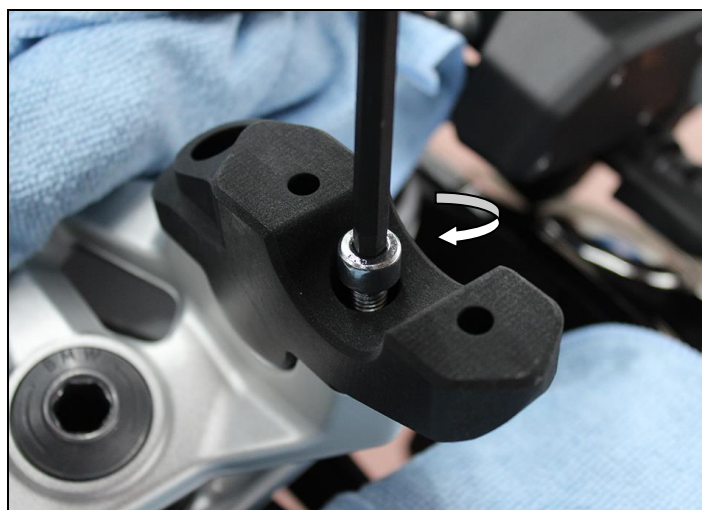


Insert the supplied AC Schnitzer handlebar risers into the fork bridge/clamping hole bases.

Caution:

Right & left and for accuracy of fit.

-> *direction of travel.*



Apply "medium-strength" threadlocker to the M8x25mm fixing screws supplied and screw them in.

Tightening torque: 19 Nm



Assembly instructions

**AC
SCHNITZER**

AC Schnitzer Handlebar riser S700738-F25

Insert the handlebars, align the handlebars with the handlebar markings and fit the standard handlebar clamps.



Apply "medium-strength" threadlocker to the standard fastening screws and screw them in.



Tighten the handlebars incl. handlebar clamps.

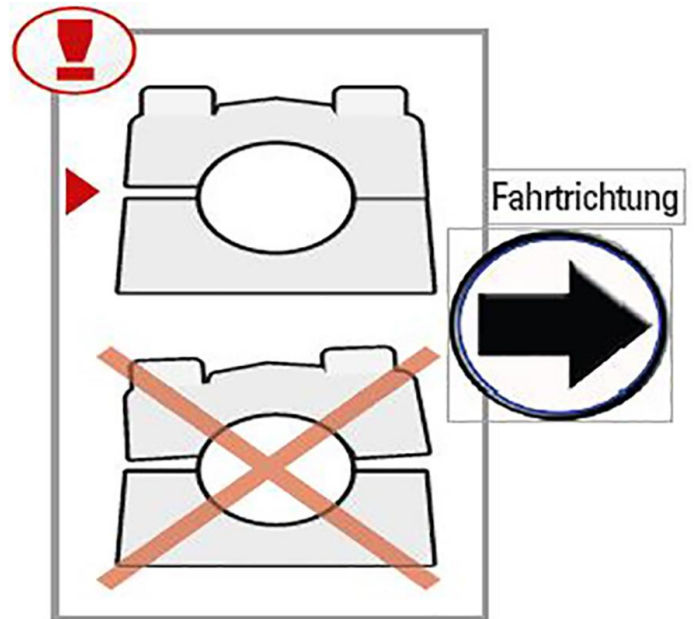
Caution:
First tighten the front fixing bolts, then the rear fixing bolts.



Assembly instructions



AC Schnitzer Handlebar riser S700738-F25



Tighten handlebars incl. handlebar clamps with torque tighten.

Tightening torque: 19 Nm

This component has an ABE!

This ABE must be carried on every journey. The component is only labelled on one of the two components.

Reference is made to the changed seating position and driving dynamics. The clearance to all moving parts must be checked and, if necessary, restored. Compatibility with other products has not been tested and cannot be guaranteed!

Subject to errors, changes and further technical development!



