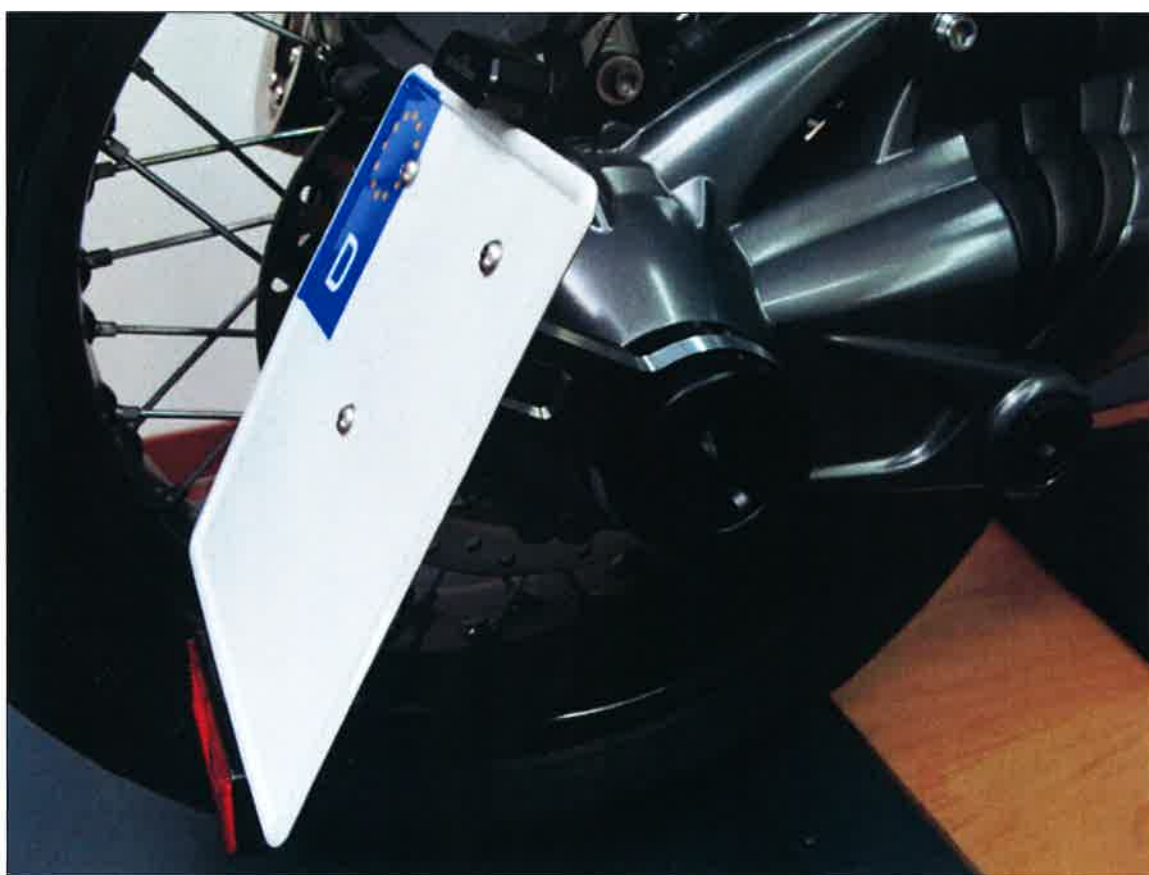




**-Assembly instruction-**  
**License plate holder**  
**(with drop pad)**



**Part-no.: S700-68813-15**

## AC Schnitzer Foot rest system BMW R nineT

### Important information!

#### Important information!

These assembly instructions must be read completely before starting the installation work and do not claim to be complete with regard to every step of the installation process. Subject to technical and editorial changes, as well as changes in content! AC Schnitzer accepts no liability for damage caused by improper installation!

Check the goods for completeness and integrity before starting work.

#### Later complaints cannot be considered.

These assembly instructions are intended for use only by authorised AC Schnitzer or BMW dealers. The target group of these assembly instructions is in all cases BMW vehicles trained specialist personnel with the appropriate expertise and tools. Knowledge of material properties and standards is required! Work on hydraulic systems should only be carried out by qualified personnel!

#### Before installation:

The vehicle must be adequately secured against rolling away or falling over for installation.

For this purpose, it is recommended to use the standard main stand or an original BMW mounting stand! Keep children and pets away from the work area!

Risk of accident due to catching or electrical short circuit! Therefore, you should leave jewellery (chains, watches, rings etc.) before starting the work!

#### After installation:

After completion of the work, a test drive may have to be carried out! After the test drive has been completed, all bolted connections must be checked for firm seating and all moving parts checked for sufficient clearance..

The lighting unit, in particular the brake light, must then be checked for proper functioning. The component is subject to registration.

#### Installation time ( 1 AW = 5 minutes )

The installation time is approx. 10 AW, which can vary depending on the condition and equipment of the vehicle. (This value is only a recommendation and is not binding!)

#### Required tool

- Standard Torx tool
- Hot air gun
- Soldering station
- Screw adhesive (medium strength)

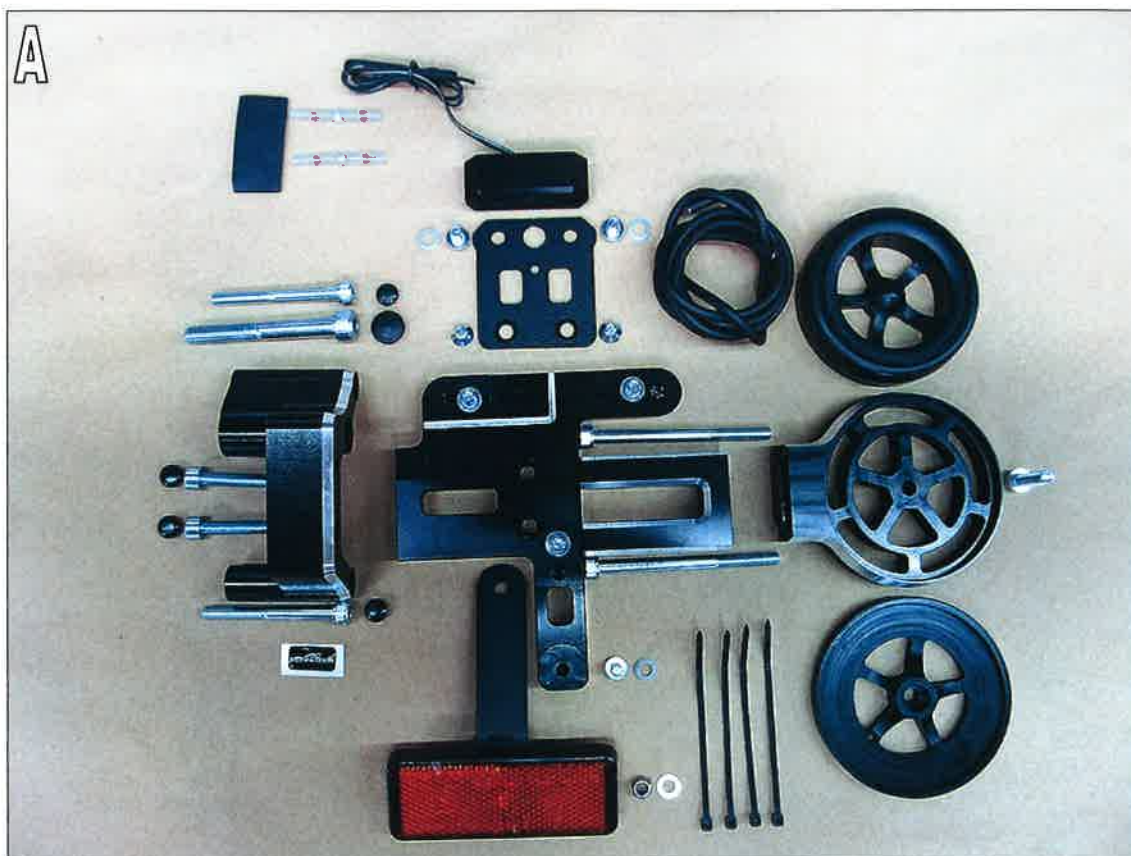
Assembly instruction No.: S700-68813-15 / Standing: 05.10.2017 RVo

AC Schnitzer - Neuenhofstraße 160 - D - 52078 Aachen - Phone. 0241/5688 -300 fax -135 / [www.ac-schnitzer.de](http://www.ac-schnitzer.de)

## AC Schnitzer License plate holder with drop pad

Chapter	Page
1. Delivered components	4
2. Installation of the AC Schnitzer License plate holder with drop pad	5

### AC Schnitzer License plate holder with drop pad



- A** AC Schnitzer License plate holder with drop pad  
(only available in full)

# Assembly instruction

AC  
SCHNITZER

## AC Schnitzer License plate holder with drop pad

### 2. Installation

- Park the vehicle safely and secure it against falling over or rolling away. (Fig. 1)

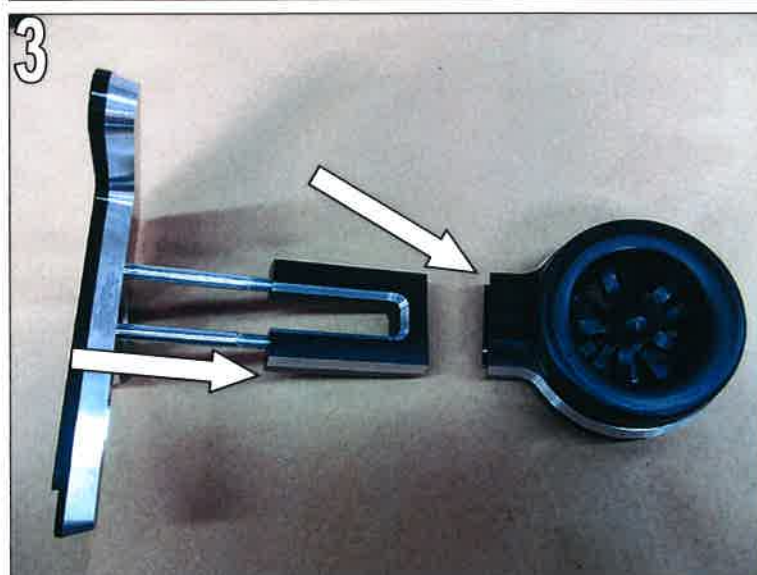


- Plug the nylon sanding pad together and fasten it with the supplied M6 screw. Apply screw first with screw adhesive.

- Tightening torque: 9.5 Nm (Fig. 2)



- Fit the license plate holder with M6 screws and guide it through the holder as shown in the illustration and secure it with a nylon pad. Apply screw adhesive to the screws beforehand. (Fig. 3)



Assembly instruction No.: S700-68813-15 / Standing: 05.10.2017 RVo

AC Schnitzer - Neuenhofstraße 160 - D - 52078 Aachen - Phone. 0241/5688 -300 fax -135 / [www.ac-schnitzer.de](http://www.ac-schnitzer.de)



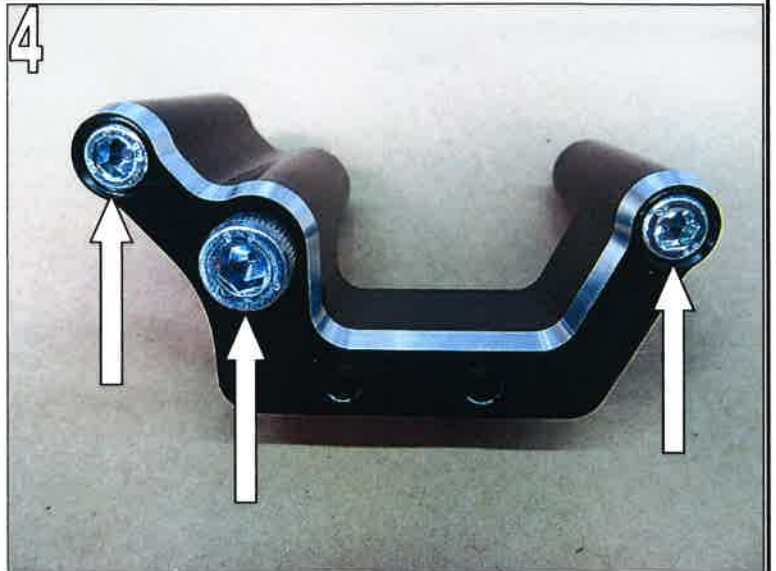
# Assembly instruction



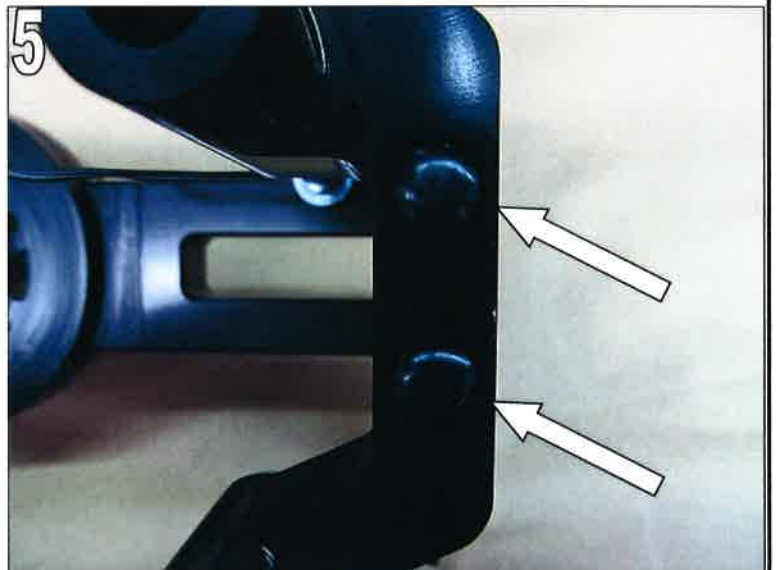
## AC Schnitzer License plate holder with drop pad

### 2. Installation

- Equip the supplied basic holder with M6x55 (2x) and M8x65mm (1x). (Fig. 4)



- Screw the basic holder to the license plate holder using M6x30mm screws (2x).  
- Apply screw glue to screws first. Tightening torque: 9.5 Nm.  
- Finally, press the supplied cover plugs into the screw openings. (Fig. 5)



- Fasten the reflector to the bracket with washer and self-locking nut (fig. 6).



Assembly instruction No.: S700-68813-15 / Standing: 05.10.2017 RVo

AC Schnitzer - Neuenhofstraße 160 - D - 52078 Aachen - Phone. 0241/5688 -300 fax -135 / [www.ac-schnitzer.de](http://www.ac-schnitzer.de)

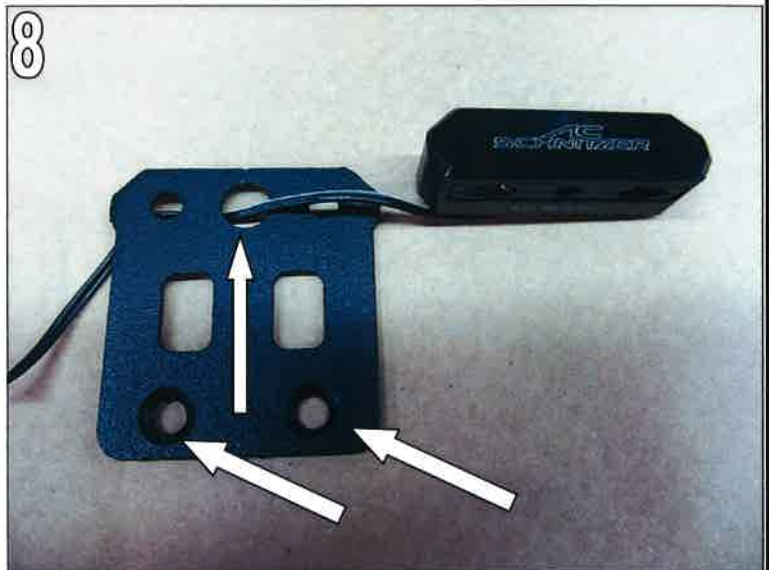
## AC Schnitzer License plate holder with drop pad

### 2. Installation

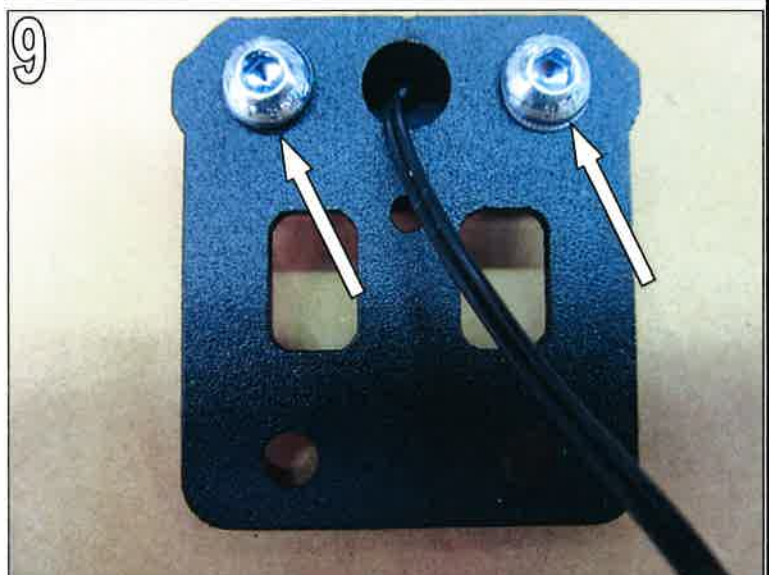
- Fasten the bracket of the provided reflector to the license plate holder with M5 screw and washer, apply screw glue to the screw beforehand. Tightening torque 5.5Nm. (Fig. 7)



- Thread the cable of the license plate lighting according to the illustration through the hole provided in the holder. Make sure that the recesses are visible from the front. (Fig. 8)



- From the rear side, mount license plate light with supplied M6 x 10mm screws and washers (9.5Nm). Apply screw glue to screws first. (Fig. 9)



# Assembly instruction



## AC Schnitzer License plate holder with drop pad

### 2. Installation

- Lay the license plate lighting cables in the cable ducts provided for this purpose and screw the holder of the license plate lighting to the license plate holder. Apply screw glue to countersunk screws before screwing in.

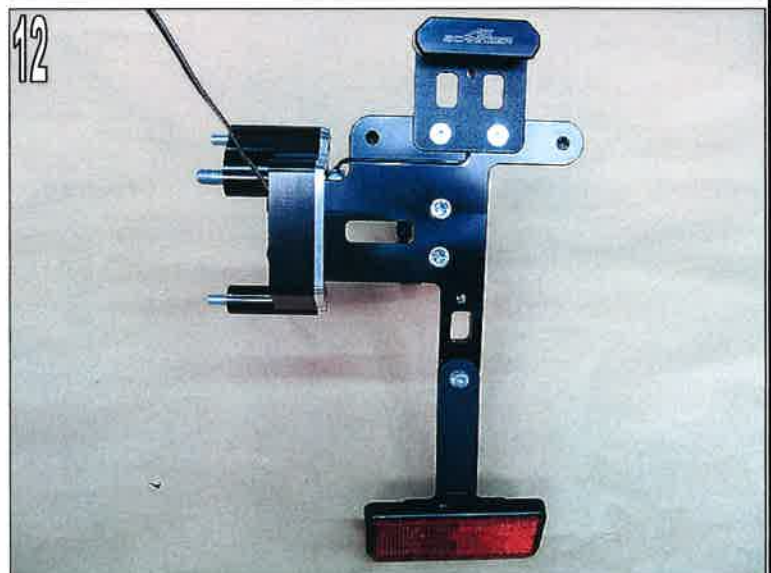
(Fig. 10)



- Loosen and remove the rear fastening screw of the brake calliper as standard.. (Fig. 11)



- Attach prepared license plate holder to the vehicle and fasten it at the end. Tightening torque of the M6 x 55mm screws: 9.5 Nm, Screws M8 x 65:24Nm (Fig. 12)



Assembly instruction No.: S700-68813-15 / Standing: 05.10.2017 RVo

AC Schnitzer - Neuenhofstraße 160 - D - 52078 Aachen - Phone. 0241/5688 -300 fax -135 / [www.ac-schnitzer.de](http://www.ac-schnitzer.de)



# Assembly instruction

AC  
SCHNITZER

## AC Schnitzer License plate holder with drop pad

### 2. Installation

- Fit the mounting screws of the licence plate holder with the supplied cover caps.

(Fig. 13)



- Fasten the registration plate to the license plate holder using the screws supplied. Apply screw adhesive to screws first. (Fig.14)

- The license plate holder is designed for current German standard licence plates (180x200mm).
- Other formats were not tested.



- Lay the cable of the number plate lighting according to the illustration along the brake calliper.. (Fig. 15)



Assembly instruction No.: S700-68813-15 / Standing: 05.10.2017 RVo

AC Schnitzer - Neuenhofstraße 160 - D - 52078 Aachen - Phone. 0241/5688 -300 fax -135 / [www.ac-schnitzer.de](http://www.ac-schnitzer.de)

# Assembly instruction



## AC Schnitzer License plate holder with drop pad

### 2. Installation

- Further installation behind the standard steel flexible brake hose, the paraleval strut, the rear frame into the cable area below the passenger seat. (Fig. 16)



- Connect the installed cable to the standard wiring harness or preferably to the wiring harness of the AC Schnitzer inner mudguard. Pay attention to polarity!

Licence plate light:

Black/white cable -> + pole

Black cable -> Vehicle mass

- Ensure that the standard indicator lighting is disabled.

(Fig. 17)



- Apply AC Schnitzer vitro stickers at the desired place. Degrease the bonding area beforehand. (Fig. 18)

- The component is subject to registration!  
- The marking required for registration is located at the bottom of the basic holder.

- Inform customers about limited freedom of inclination!





## Further AC Schnitzer products for your BMW R nineT



*AC Schnitzer Paralever brace, adjustable  
(with TÜV parts certificate)  
S700-68789-15*



*AC Schnitzer fork bridge Heritage  
(with TÜV parts certificate)*

*S211-68852-15*



*AC Schnitzer tank cover  
S700-67942-15*



*AC Schnitzer liquid covers  
S700-68774-15*