



## **-Mounting instructions-**



**Clip-on Handlebar  
&  
fork bridge Heritage  
Part no.: S50121740406  
&  
Part no.:S700111-F22**

# General information!



## AC Schnitzer Clip-on & Fork bridge

### Important information!

### Important information!

These installation instructions must be read completely before starting the installation work and do not claim to be complete with regard to every work step and every detail. Subject to technical, editorial and content changes! AC Schnitzer accepts no liability for damage caused by improper installation!

Check goods for completeness and intactness before starting work.

Later complaints cannot be considered.

These installation instructions are intended exclusively for use by authorised AC Schnitzer or BMW dealers. In any case, the target group of these installation instructions is specialist personnel trained on BMW vehicles with the appropriate specialist knowledge and tools. Knowledge of material properties and standards is a prerequisite! Work on hydraulic systems should only be carried out by competent persons!

### Before assembly:

For assembly, the vehicle must be adequately secured against rolling away or falling over.

For this purpose, we recommend using the standard main stand or an original BMW assembly stand! Keep children and pets away from the work area!

Risk of accident due to getting stuck or electrical short-circuit! Before starting work, please take off any jewellery (chains, watches, rings, etc.)!

### After assembly:

After completion of the work, a test run may have to be carried out! After completion of the test drive, all screw connections must be checked for tightness and all moving parts for sufficient clearance..

### Installation time ( 1 AW = 5 minutes )

The installation time is approx. 24 AW, which can vary depending on the condition and equipment of the vehicle. (This value is only a recommendation and is not binding!)

### Required tools

Standard Torx tool KFZ

screw glue medium strength

Torque wrench

Drill 4mm with suitable drive

scissor jack or similar

Protection against damage (fuel tank cover)

Assembly instruction No.: S50121740406 & S700111F22 / Standing: 06 / 2018 RVo

AC Schnitzer - Neuenhofstraße 160 - D - 52078 Aachen - phone. 0241/5688 -300 Fax -135 / [www.ac-schnitzer.de](http://www.ac-schnitzer.de)

## AC Schnitzer Clip-on & fork bridge

Chapter	Seite
1. delivered components	4
2. Montage des AC Schnitzer Clip-on & Fork bridge	5

# delivered components



## AC Schnitzer Clip-on & fork bridge



**A** AC Schnitzer handlebar set Clip-on

**B** AC Schnitzer fork bridge Heritage (incl. 4x spacers without illustration.)

# Assembly instruction



## AC Schnitzer Clip-on & Fork bridge

### 2. Assembly

- Park the vehicle safely and secure it against falling over or rolling away. (Fig. 1)

**The AC Schnitzer triple clamp can be mounted in connection with the AC Schnitzer clip-on handlebar set or a standard stub handlebar.**

The Clip-on handlebar can also be mounted alone, i.e. without the AC Schnitzer triple clamp. The work steps concerning the installation of the AC Schnitzer triple clamp must therefore be skipped.

For vehicles with standard stub handlebars, the triple clamp can also be installed on its own.



- Remove rear-view mirrors on both sides of the vehicle and store them safely temporarily by turning the mirror gel counterclockwise. (Fig. 2)



- On the left side of the vehicle: Loosen and remove both fixing screws, remove the clutch armature from the handlebar and place it forward. DO NOT loosen the hydraulic line. (Fig. 3)





# Assembly instruction

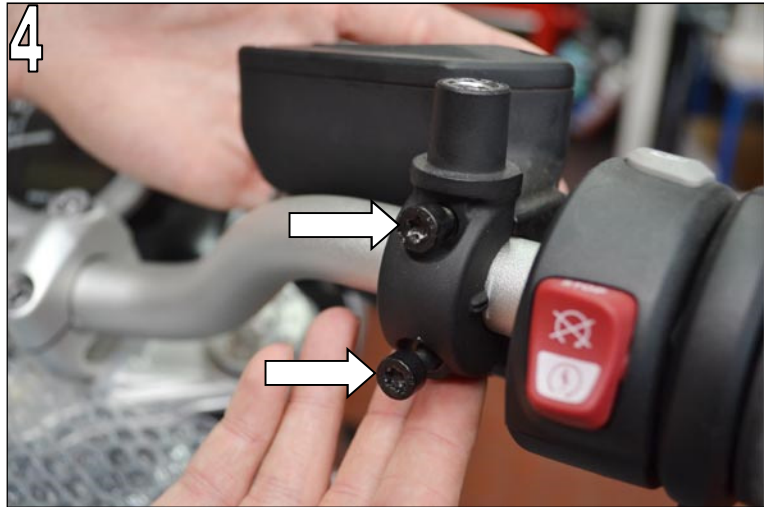


## AC Schnitzer Clip-on & fork bridge

### 2. Assembly

- On the right side of the vehicle: Loosen and remove both fastening screws of the brake fitting. Remove the brake assembly from the handlebar and place it forward. DO NOT loosen the hydraulic line.

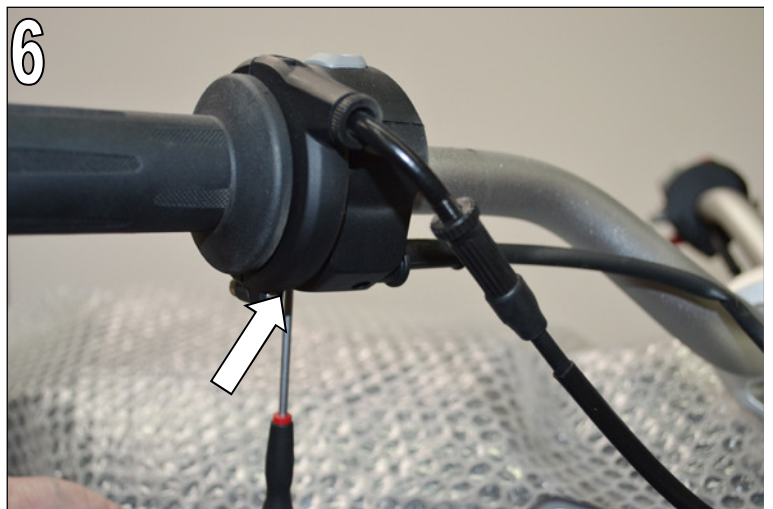
**ATTENTION:** If brake fluid escapes, collect it immediately and neutralize it! There is a risk of damage to the paintwork etc. (Fig. 4)



- On the left side of the direction of travel: Fold down the rubber edge of the handle and loosen and remove the exposed fastening screw. Make sure that the fastening nut on the back is not lost. Do not yet remove the handlebar and electric unit from the handlebar! (Fig. 5)



On the right-hand side of the vehicle: Using the TX8 Torx screwdriver, loosen the fastening screw of the cover through the opening in the cover of the electrical unit and remove the cover. (Fig. 6)



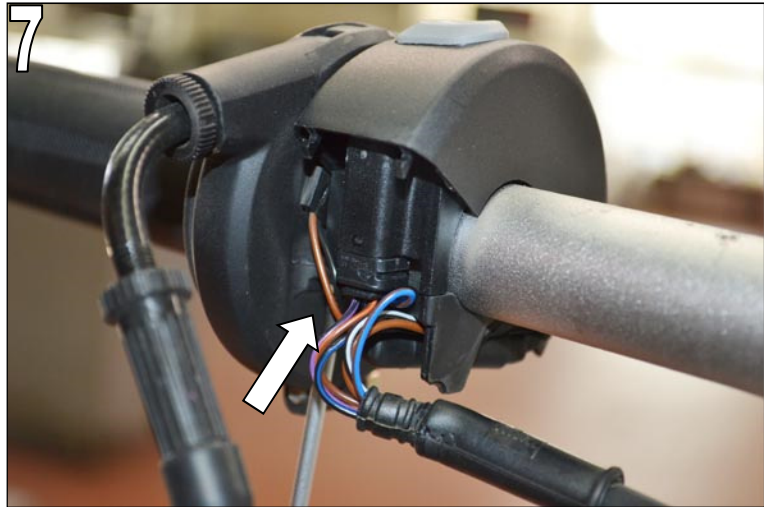
# Assembly instruction



## AC Schnitzer Clip-on & fork bridge

### 2. Assembly

- Loosen and remove the exposed fastening screw (TX8). Disconnect the plug connection from the handlebar heater (extra equipment) and remove the electric unit from the handlebar. (Fig. 7)



- Loosen and remove the fastening screw of the gas rotary handle.  
Do not yet remove the throttle grip from the handlebar. (Fig. 8)



- On both sides: Loosen the fixing screw of the handlebar weights and remove the weights from the handlebars. Loosen and remove the screws from the handlebar clamp.

**ATTENTION:** The handlebar turns over! Remove the upper clamp block from the vehicle, remove the steering rod from the bearing blocks and remove the handles from the handlebar. (Fig. 9)





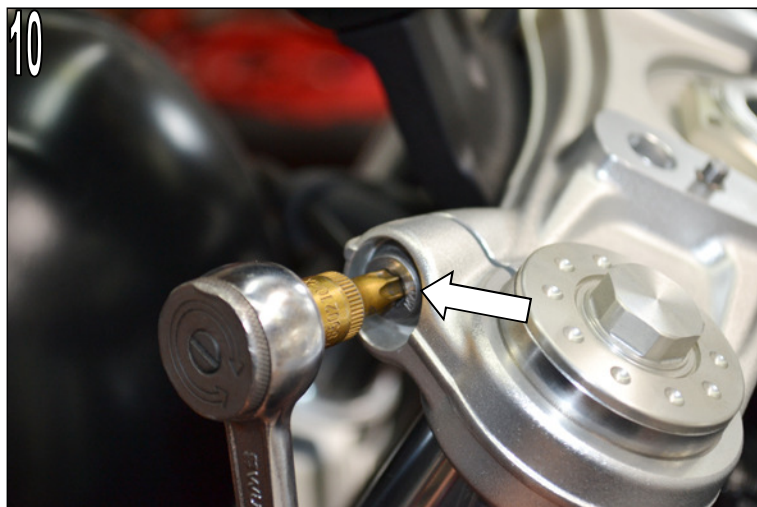
# Assembly instruction



## AC Schnitzer Clip-on & fork bridge

### 2. Assembly

- Remove the lower bearing blocks from the standard gantry bridge. Loosen the lateral clamping screws of the fork arms (on both sides) approx. 2 turns. (Fig. 10)



- Remove the cover of the ignition switch upwards from the ignition switch. (Fig. 11)



- Loosen and remove the hexagon nut (SW 36) fixing nut of the triple clamp. To do this, tape the base of the nut to avoid scratches, etc. (Fig. 12)





# Assembly instruction

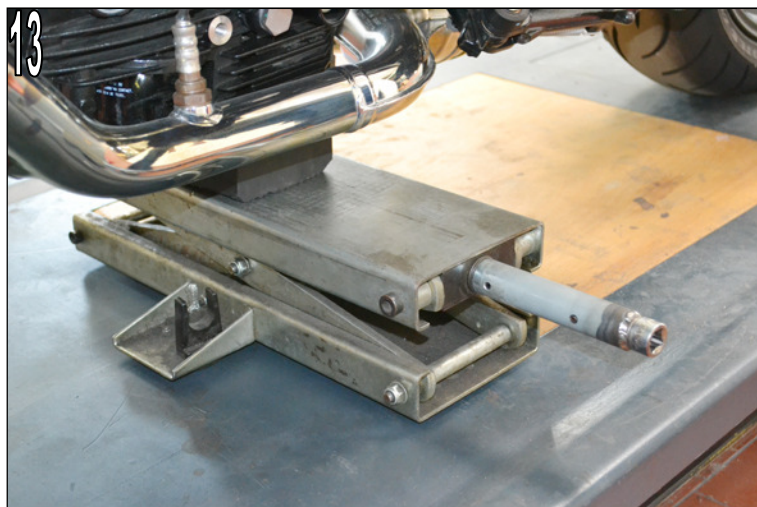


## AC Schnitzer Clip-on & fork bridge

### 2. Assembly

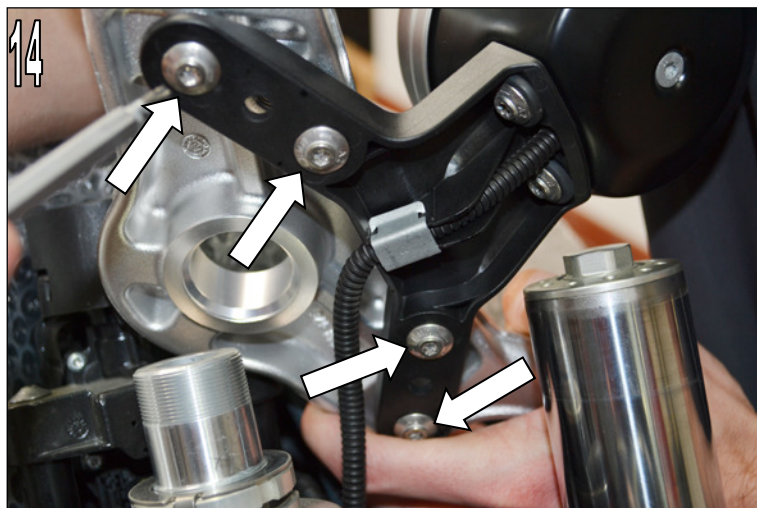
- Unload the front wheel with the scissor jack and rubber block on it, do not lift it!

(Fig. 13)



- Pull the standard triple clamp upwards from the fork spars.

Loosen the fastening screws of the speedometer holder and separate the speedometer holder from the triple clamp. (Fig. 14)



- Place the supplied spacer sleeves on the speedometer holder as shown in the illustration. (Fig. 15)



# Assembly instruction



## AC Schnitzer Clip-on & fork bridge

### 2. Assembly

- Screw the speedometer holder with attached spacer sleeves to the AC Schnitzer triple clamp and tighten all 4 screws at the end. (Fig. 16)



- Attach the clamping sleeves of the AC Schnitzer Clip-on handlebar set to the fork spars.  
ATTENTION: Left and right versions are different!  
Observe the marking on the underside of the clamping sleeves!  
Slide clamping sleeves on both sides approx. 100mm onto fork spars. (Fig. 17)



- Slide the AC Schnitzer triple clamp onto the clamping sleeves as shown. Make sure that the triple clamp rests completely on the nuts of the head tube.  
Clean the standard nut of the triple clamp and coat with medium-strength screw adhesive. Fasten the lock nut at the end.
- Tightening torque of the lock nut: 100Nm
- Fasten the screws of the triple clamp clamp to the end of the standpipe. Tightening torque: 19Nm. (Fig. 18)





## AC Schnitzer Clip-on & fork bridge

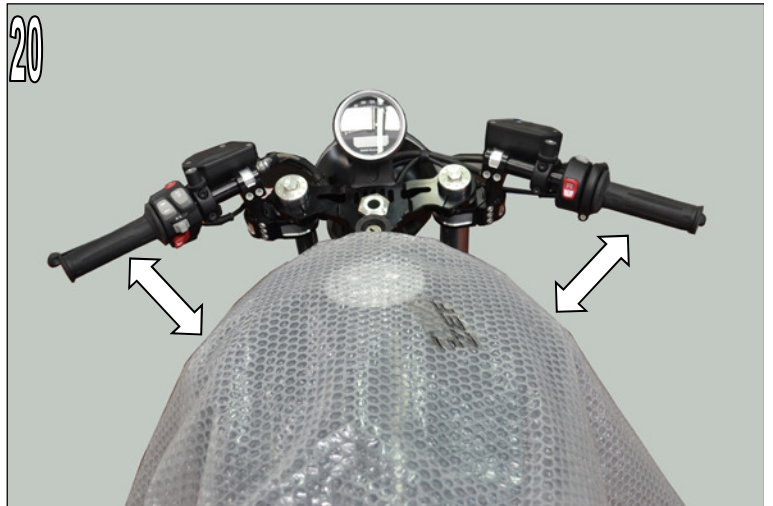
### 2. Assembly

- On both sides:
  - Slide stub tubes into handles
  - Slide the stub tubes into the handlebar holder
  - Insert the handlebar holder into the clamping sleeves on the fork rod.
  - Observe MAX markings!  
(Fig. 19)



- Align both sides equally using the scales.
- Align the stub pipes and tighten the screws of the clamp fastening in such a way that twisting is no longer possible. Note the 5° bend of the stub tubes.
- Temporarily attach the electrical units and handle fittings as shown in the illustration..
- Check steering angle! The manual valves must be free to the fuel tank..

ATTENTION: Danger of bruising! (Fig. 20)



On the left side of the vehicle: Fold down the rubber edge of the handlebar and mark the mounting hole after determining the handlebar position..  
(Fig. 21)





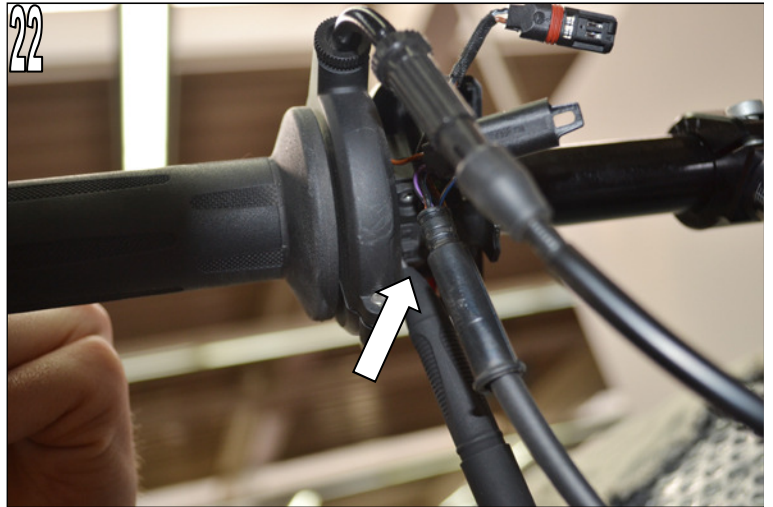
# Assembly instruction



## AC Schnitzer Clip-on & fork bridge

### 2. Assembly

- On the right side of the vehicle: After determining the handle position, remove the electrical unit and mark the fastening hole from below. (Fig. 22)
- Drill ONE through hole with a diameter of max. 4mm on each stump.



- Final assembly of all components as described above.

Observe the tightening torques of the clamps as follows:

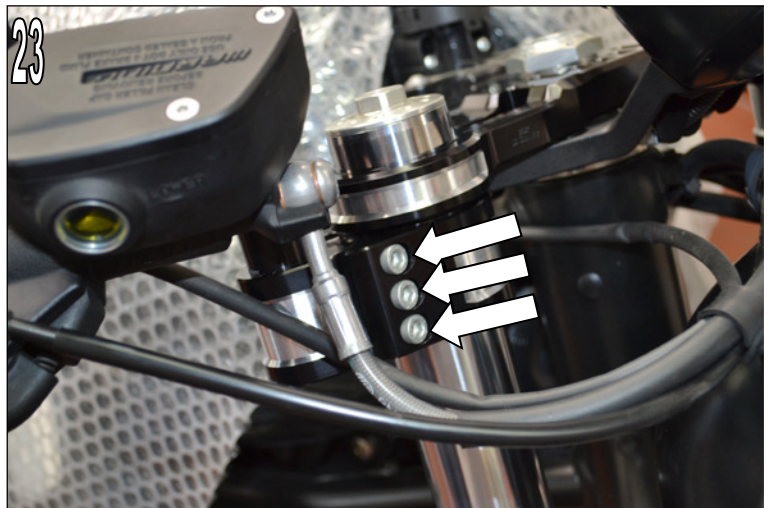
**M6x 12 (10.9):** Tighten in 3 steps:

1. 10Nm 2. 15Nm 3.16Nm

**M6x16 (10.9):** Tighten in 3 steps:

1. 10Nm 2. 15Nm 3.20Nm

(Fig. 23)



- Finally check clearance to the left fuel tank, re-position if necessary.

- Check the function of the handlebar lock

(Fig. 24)



# Assembly instruction



## AC Schnitzer Clip-on & fork bridge

### 2. Assembly

- Check clearance to the fuel tank on the right side, reposition if necessary.



- Assemble AC Schnitzer bar end weights (special accessories, not included in kit).
  - To do this, prepare them according to the illustration and coat the hexagon socket head screw with medium-strength screw adhesive..
- Slide the weight into the handlebar stub and fasten it at the end. When fitting the end cap, make sure that the inner rubber ring is only coated with water. DO NOT use oil, silicone spray or similar. Press in the end cap while rotating.



### Finishing work:

- Check all electrical consumers for function.
- Protect the headlamp housing with clear adhesive tape against friction of the throttle cable, etc
- The component must be registered. Present to a recognised expert immediately after installation.
- Notify customers of changes in driving behaviour and centre of gravity.
- Ensure that no electrical or hydraulic cable is clamped, kinked or stretched.